

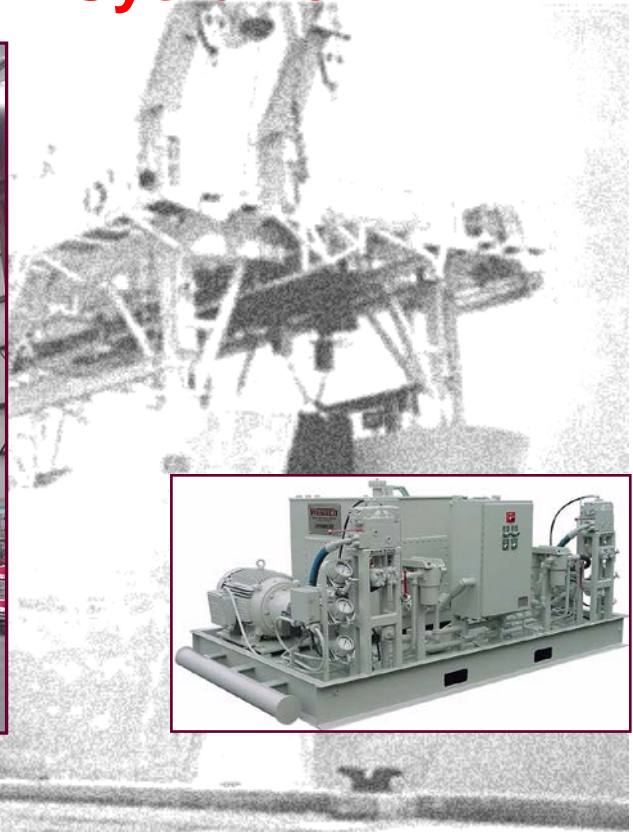


# CONTROL FLOW INC.®



FLOCON MO-COMP **WESTECH** RETSCO

## Pipe Tension Systems



### *Pipe Lay Tensioning Systems*

**WesTech Pipe Lay Tensioner Equipment** is engineered to each specific customers critical requirements. Pipe Tensioners are track-type tension systems capable of holding back on the pipeline, using constant tension characteristics. Pipe Tensioners absorb the curvature of the pipeline and accommodate nominal changes in coating diameter. Available drives include electric, electro-hydraulic or diesel-hydraulic power units. Control is by solid-state integrated electronic digital circuitry.

Single Pipe Tensioners can be arranged in multiple tandem units to obtain higher tension when required. Welding or other workstations may be located between tandem units depending on barge installation.

## Control Flow/WesTech Products

### *Superior Pipe Lay And Handling Solutions*

Contact a Control Flow, Inc. sales representative for further detailed information

Control Flow, Inc. • 9201 Fairbanks N. Houston Rd. • Houston, Texas 77064-6206 • Phone (281) 890-8300

Fax (281) 890-3947 • E-mail: [sales@controlflow.com](mailto:sales@controlflow.com) • Web: [www.controlflow.com](http://www.controlflow.com)

Copyright Control Flow, Inc. 2008