

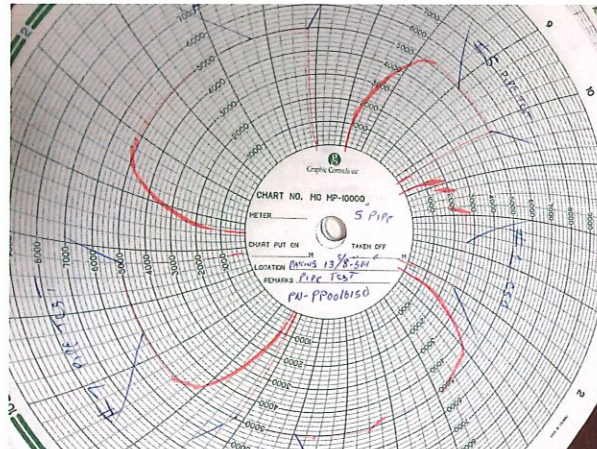
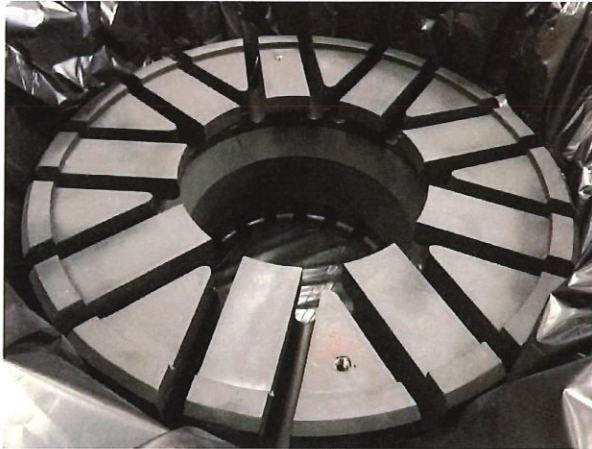


CONTROL FLOW INC.



FLOCON MO-COMP **WESTECH** RETSCO

CONTROL FLOW, INC. TYPE GK STYLE BOP PRODUCT INFORMATION



*The Long Life Packing Element for 13 5/8" - 5,000psi Annular BOP Type GK.

- Tested per API 16A 4th Edition fatigue specifications.
- 364 open and close operations.
- 52 pressure cycle tests including low pressure 200-300psi, followed by high pressure 5,000psi.
- 26 Cycle Tests Performed on 5" Pipe, and 26 Cycle Tests Performed on 7" Pipe.
- Successful drift test after closing packing element.
- Complete shut off test successful (CSO).
- The packing element never leaked / failed.

Contact Control Flow, Inc. in Houston, Texas for pricing and delivery.

- James (Jim) Adams Email: jadams@controlflow.com Phone 1-281-890-8300
- Sales Email: sales@controlflow.com Phone 1-281-890-8300

*Performance is subject to change based on the operational conditions.

Control Flow/Flocon Products

Taming Drilling and Production Pressures Worldwide

Contact a Control Flow, Inc. sales representative for further detailed information

Control Flow, Inc. • 9201 Fairbanks N. Houston Rd. • Houston, Texas 77064-6206 • Phone (281) 890-8300
Fax (281) 890-3947 • E-mail: sales@controlflow.com • Web: www.controlflow.com

Copyright Control Flow, Inc. 2021